

T H E L O D G E
— RESORT & SPA —
C L O U D C R O F T , N M
It's Charmed



Wedding Information

The Lodge is a full service wedding and reception venue. Our Event Manager will work with you to plan your wedding and reception, and will be on site for your event

All food and beverage must be provided by The Lodge. A \$1,000.00 non-refundable deposit and signed group contract are required to reserve the space and lodging rooms.

WEDDING MINIMUM: \$7500

(Food, lodging and event rooms all apply toward the minimum)

The estimated balance is due in full 15 days prior to your event. Check or Credit Card only. Invoice(s) will be provided.

Food & Beverage

The Lodge offers many options of menu selections for your event. Coffee/ tea/ water service, Finger foods, breakfast, lunch, and dinner buffets are available. Menus below.

Liquor Service

*The Lodge can provide full liquor service for the convenience of your event **At no time will a group be allowed to bring in their own alcohol.** There is an initial bar setup fee of \$300.*

Service Charges

A 20% service charge and 7.75% sales tax will be added to all prices excluding the room rental fee. The room rental fee will only have a 7.75% sales tax added.

Entertainment

If entertainment is hired, a \$250 service fee will be charged if The Lodge's set-up services are required. Due to the proximity of The Lodge lodging rooms to our banquet areas, the volume will be monitored. Entertainment is required to stop playing by 10-pm in The Lodge and 11-pm at the Pavilion.

Lodging Room Blocks

We are happy to provide your guests for your wedding/reception event a discounted room rate if reserved within the chosen room block. If rooms are rented by your guests which are outside of those set aside by you for the block, the regular (or "rack") rate applies. Lodging is discounted 10% off rack rate across the board for a room block.

Environmental Concerns

The Lodge takes our commitment to the environment and wildlife extremely seriously. We kindly request that only fully biodegradable and / or disposable items be used for the send-off. These include: Bird seed, REAL flower petals (please, no silk or artificial flower petals), sparklers (these are disposable), or bubbles.

If these guidelines are not adhered to and we must dispose of your items for you, there will be an additional cleaning cost of \$500.

General Information

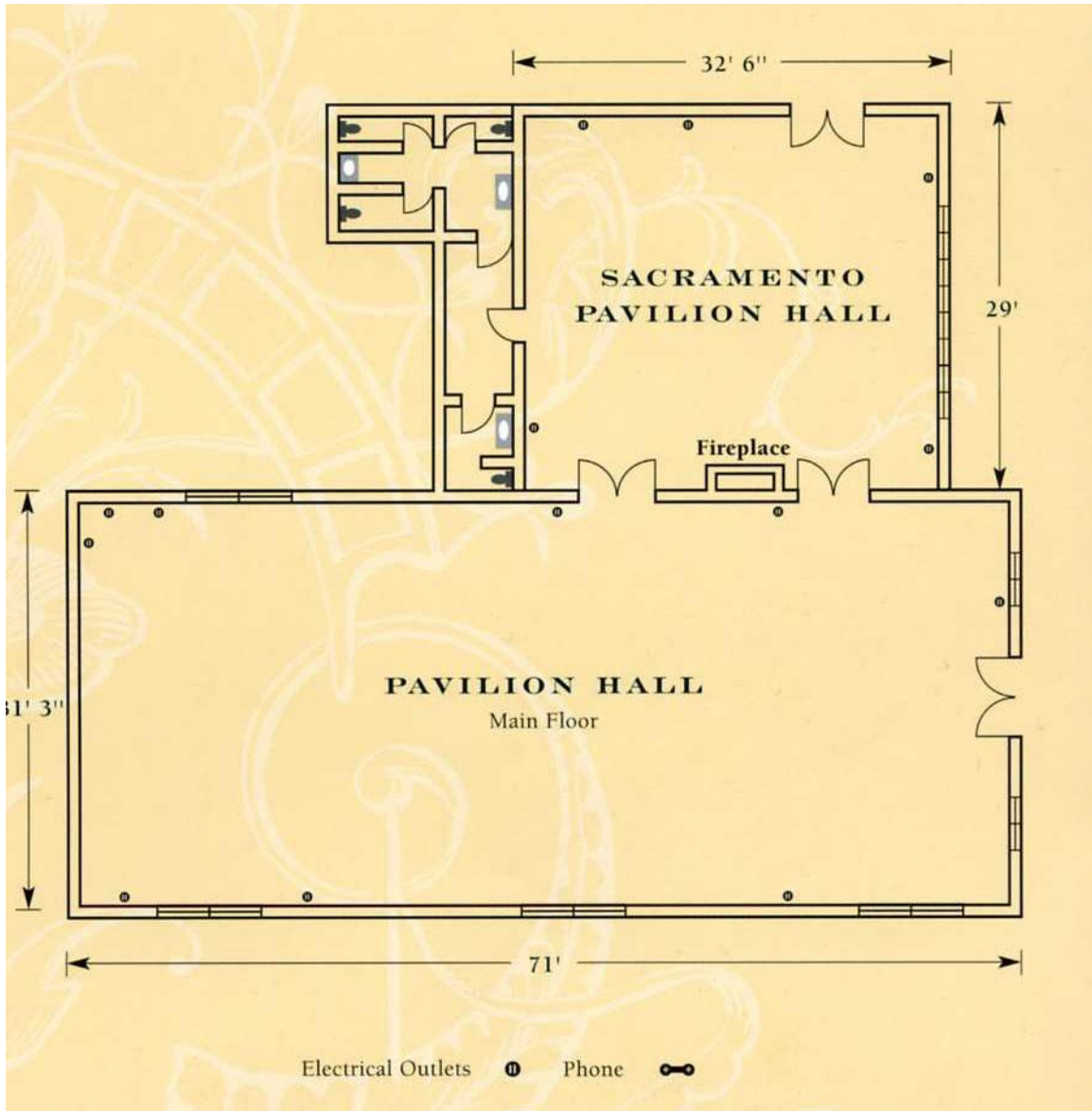
The Lodge is a full service resort offering many facilities and services. Fifty-nine lodging rooms are available, including a Honeymoon Suite, as well as numerous activities. Activities include; golf, outdoor recreation, and hiking. We also have a full-service Day Spa. The Lodge is located at 1 Corona Place, Cloudcroft, NM 88317. Our phone numbers are (800) 395-6343 or (575) 682-2566; fax (575) 682-2715. Please look on the web at www.thelodgeresort.com.

Banquet Rooms

Pavilion Hall / Sacramento Room

3,167 ft. sq. total

2,222 ft. sq. Pavilion, 975 ft. sq. Sacramento Room



PAVILION HALL AND COMMON AREA CAPACITIES

PAVILION HALL

Floor	Dimensions	Square Footage	Theatre	Classroom	Banquet
Main	71' x 31'	2,222	200	75	100

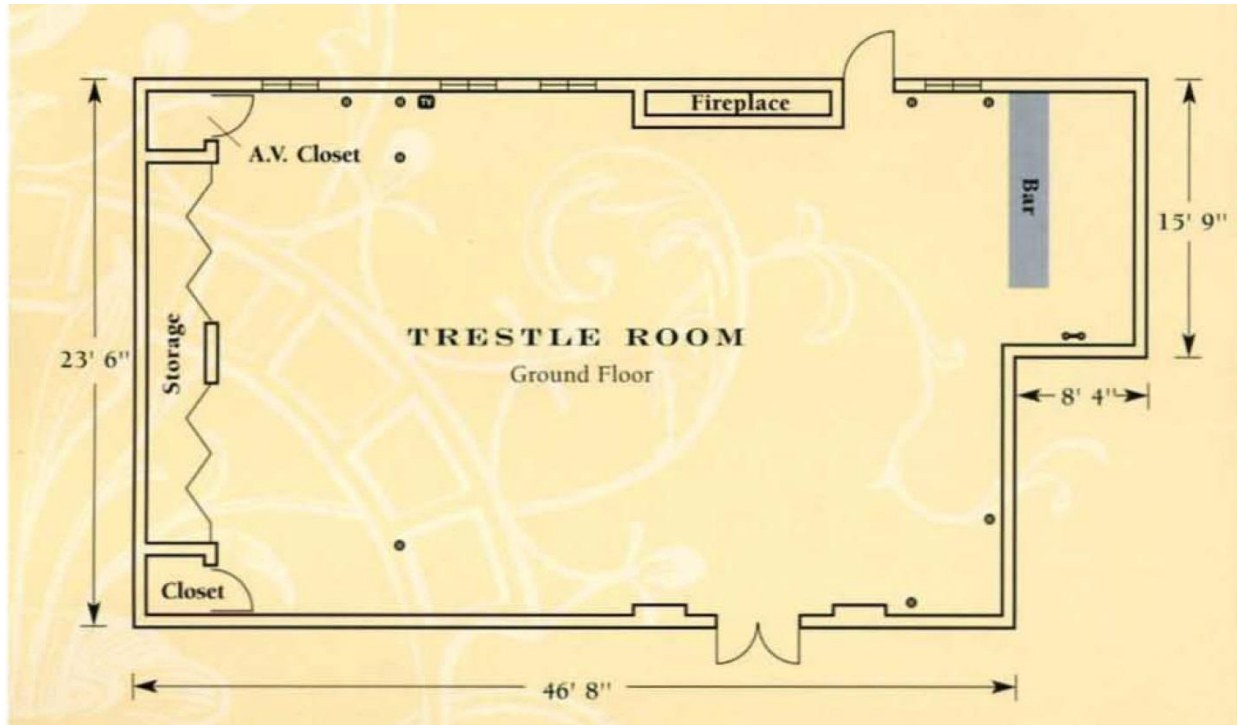
SACRAMENTO PAVILION HALL

Floor	Dimensions	Square Footage	Theatre	Classroom	Banquet
Main	33' x 29'	945	50	30	40

Events in the Pavilion Hall require lodging reservations in the 8 Pavilion rooms, the night of the event. The Rental Cost for the Pavilion Hall is \$1,500.00 plus tax for a one day event, \$300 plus tax per day for subsequent days. This includes parking, set up, tables, linens, serving ware and clean up.

Trestle Room

1,104 ft. sq. total



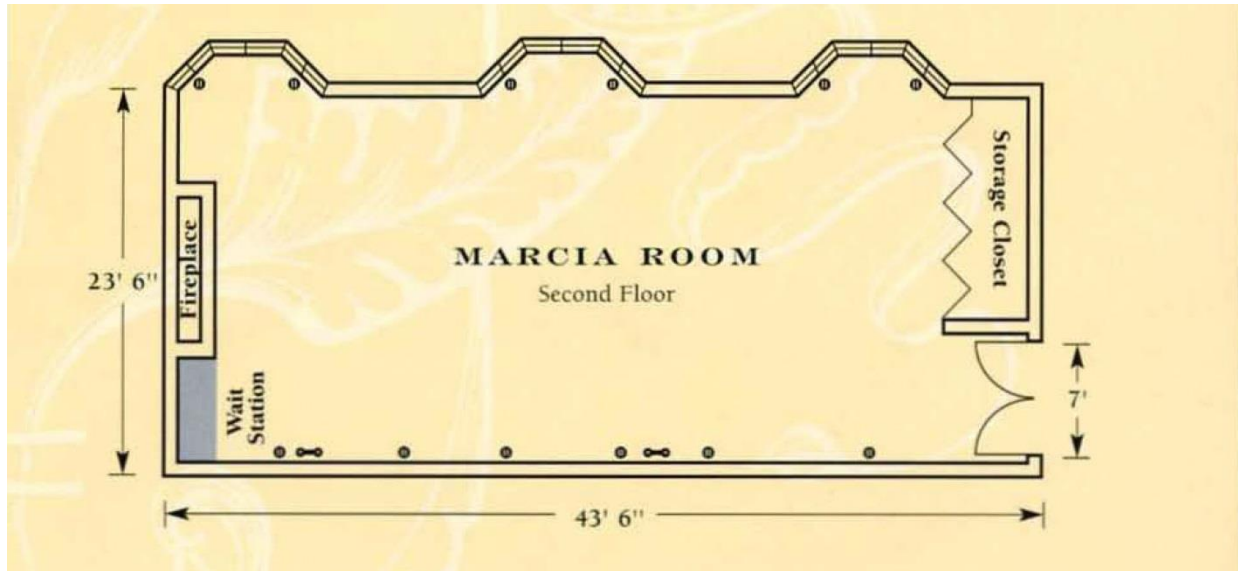
TRESTLE ROOM CAPACITIES

Floor	Dimensions	Square Footage	Theatre	Classroom	Banquet
Ground	47' x 24'	1,104	70	38	64

The Rental Cost for the Trestle Room is \$350.00 plus tax for a one day event, \$75.00 plus tax per day for subsequent days. This includes set up, tables, linens, serving ware and clean up.

Marcia Room

1,029 ft. sq. Total



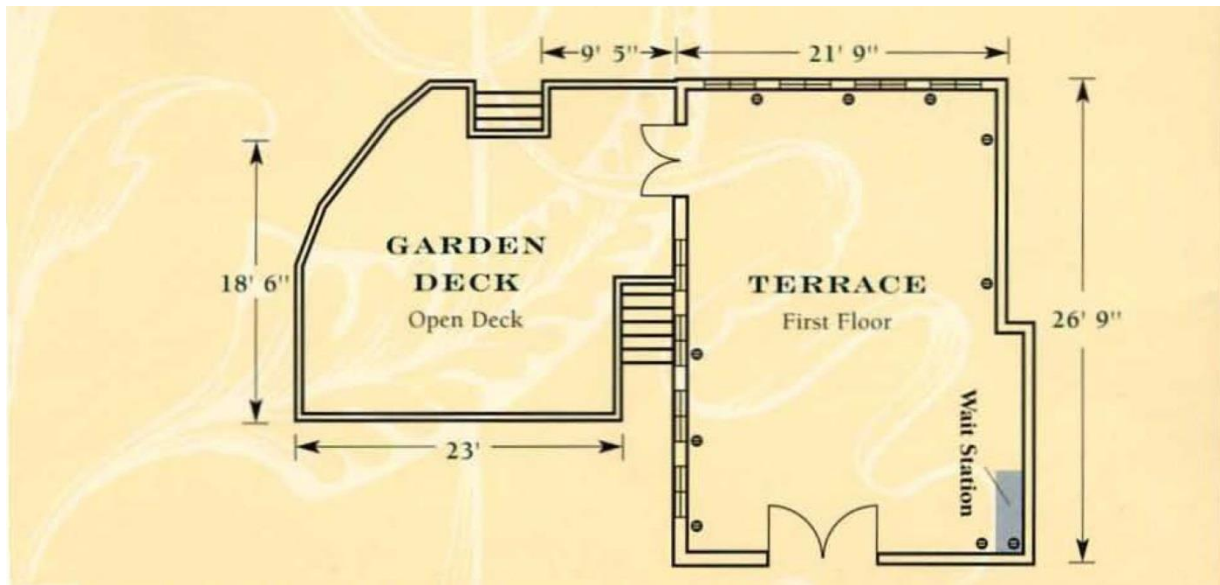
MARCIA ROOM CAPACITIES

Floor	Dimensions	Square Footage	Theatre	Classroom	Banquet
Second	44' x 24'	1,029	70	50	70

The Rental Cost for the Marcia Room is \$400.00 plus tax for a one day event, \$100.00 plus tax per day for subsequent days. This includes set up, linens, serving ware and clean up.

Sacramento Terrace Room / Garden Deck

1,017 ft. sq. Total

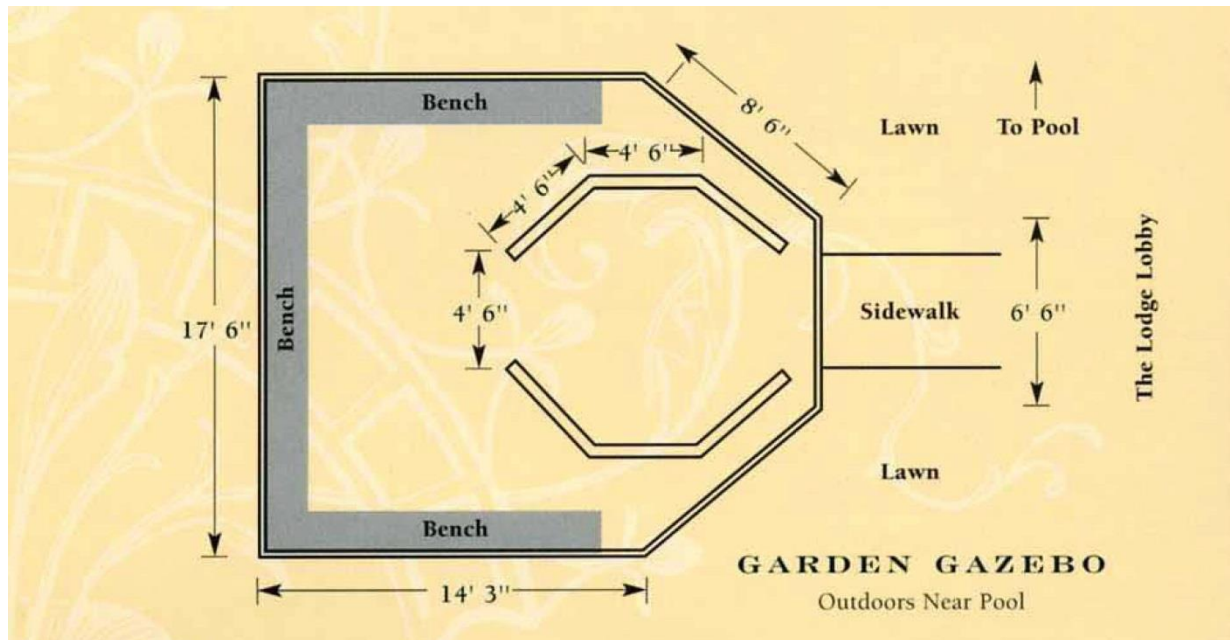


TERRACE AND GARDEN DECK CAPACITIES					
TERRACE					
Floor	Dimensions	Square Footage	Theatre	Classroom	Banquet
First	22' x 27'	589	N/A	N/A	36
GARDEN DECK					
Floor	Dimensions	Square Footage	Theatre	Classroom	Banquet
First	23' x 19'	428	N/A	N/A	30

The Rental Cost for the Sacramento Terrace / Garden Deck is \$450.00 plus tax for a one day event, \$100.00 plus tax per day for subsequent days. This includes set up, linens, serving ware and clean up.

Garden Gazebo

2,625 ft. sq.



GARDEN GAZEBO CAPACITIES

Floor	Dimensions	Square Footage	Theatre	Classroom	Banquet
Ground	14' x 18'	2,625	150	N/A	100

The Rental Cost for the Garden Gazebo is \$500.00 plus tax for a one day event, \$125.00 plus tax per day for subsequent days. This includes set up and clean up.

Liquor Service

The Lodge provides full liquor services for the convenience of your group event.

No outside alcohol is permitted.

Any group booked in the Pavilion Hall must pay a Temporary Liquor License Application Fee of \$75.00.

In accordance with Cloudcroft local ordinance, the bar must be closed by 11:00pm.

Initial Bar Expenses

Bar Setup (2 hour minimum) \$300.00

Cash Bar

Initial bar expenses are paid by the host;

Drinks are the responsibility of each individual.

Hosted Bar

All bar expenses are paid by the host.

Dinner Buffets

Price is based on one-hour buffet duration
All dinner buffets include Iced Tea and Coffee Service
(Minimum 25 people. If less, add 15%)

Western Buffet

(Gluten Free options available)

Barbecued Pork Ribs, Beef Brisket, Beef Fajitas,
Potato Salad, Creamed Corn, Ranch-Style Beans,
Jalapeño Cornbread, Apple Cobbler

\$26.95* with one entrée

\$28.95* with two entrées

\$35.95* with three entrées

Mexican Buffet

(Gluten Free options available)

Beef and Chicken Fajitas, Cheese Enchiladas, Green Chili Stew,
Pinto Beans, Flour or corn Tortillas, Salsa & Chips,
Chocolate Mousse

\$28.95*

Southwestern Buffet

(Gluten Free options available)

Grilled Chicken and Chipotle and Ancho Crusted Grilled Salmon,
Roasted Garlic Whipped Potatoes, Chef's Choice of Vegetable with Southwestern Pasta Salad, Green Salad,
Assorted Rolls with Butter and Peach Cobbler

\$33.95*

The Lodge Dinner Buffet

(Gluten Free options available)

Fresh Fruit and Cheese Tray,
Tossed Lodge Green Salad with Two Dressings and Prepared Salad,
Wild Rice Pilaf, Chef's Choice of Potato and Vegetable in Season,
Chef's Choice of Dessert,
Fresh Baked Bread and Butter

Please choose from the following entrées

Glazed Ham (Add \$2.50 per person) Pasta Primavera

Roast Pork Loin with Rosemary Beef Rib Roast

Chicken Breast with Chef's Choice of Sauce

Fresh Grilled Salmon with Chef's Choice of Sauce

\$42.95* with two entrées

\$52.95* with three entrées

*All Prices are Per Person (unless otherwise indicated)

All items subject to Sales Tax (7.25%) and Service Charge (20%)

Prices Subject to Change

Lunch Buffets

*Served for 25 or more people
If less than 25 people add 15% to the price per person
Includes Iced Tea and Coffee Service*

Taco Bar

*Seasoned Ground Beef or Chicken, Taco Shells,
Flour and Corn Tortillas, Spanish Rice, Refried Beans,
All the Toppings, Chips and Salsa
\$18.95**

Deli Sandwich Buffet

*Sliced Salami, Turkey, and Ham,
Assorted Cheeses, and all the Fixins,
Assorted Breads, Chips,
Green Salad with Two Dressings
\$17.95**

Pasta Buffet

*Choice of Penne Alfredo and Lasagna,
Garlic Bread, Chef's Choice of Vegetable,
Tossed Green Salad with Two Dressings
\$19.95**

Burgers and Brats

*Char-Broiled Hamburger Patties, Bratwursts,
With all the Fixins, Potato Chips
\$19.95**

**All Prices are Per Person (unless otherwise indicated)
All items subject to Sales Tax (7.25%) and Service Charge (20%)
Prices Subject to Change
catering@TheLodgeResort.com
sales@TheLodgeResort.com*

Breakfast Buffet

Country Breakfast

*Scrambled Eggs, Crisp Bacon, Country Fried Potatoes,
Cereal Bar, Country Cream Gravy, Fresh Baked Biscuits,
Butter and Preserves. Accompanied by Juice, Tea and Coffee Service.*

\$15.95 Per person

Large Country Breakfast

*Scrambled Eggs, Sausage, Crisp Bacon, Country Fried Potatoes,
Cereal Bar, Country Cream Gravy, Fresh Baked Biscuits,
Butter and Preserves, and a Fresh Fruit Tray.
Accompanied by Juice, Tea and Coffee Service.*

\$23.75 Per person

Southwestern Breakfast

*Corn Tortillas Filled with Scrambled Eggs and Monterey Jack Cheese,
Topped with our Green Chile Sauce, Served with Country Potatoes,
Crisp Bacon and Sausage, Flour Tortillas, Fresh Seasonal Fruit.
Accompanied by Juice, Tea and Coffee Service.*

\$15.95 Per person

The Lodge

*Scrambled Eggs, Grilled French Toast, Ham and Bacon,
Served with Country Fried Potatoes.
Accompanied by Juice, Tea and Coffee Service.*

\$15.95 Per person

The Lodge Cold Continental

*Lowfat Yogurt, Assortment of Dry Cereals, Hot Cereals,
Whole Seasonal Fresh Fruits, and Nut Breads.
Accompanied by Juice, Tea and Coffee Service*

\$13.95 Per person



The Lodge Hot Continental



*Scrambled Eggs, Sausage, Crisp Bacon, Cereal Bar,
Country Cream Gravy, Fresh Baked Biscuits, Butter and Preserves,
and a Fresh Fruit Tray. Accompanied by Juice, Tea and Coffee Service.*

\$15.95 Per person

**All Prices are Per Person (unless otherwise indicated)
All items subject to Sales Tax (7.25%) and Service Charge (20%)*

*Prices Subject to Change
catering@TheLodgeResort.com
sales@TheLodgeResort.com*

Rev. 7-2017



Hors d' Oeuvre Menu

(50 pieces per tray)

Cold Hors d' Oeuvres

Prosciutto with Melon

*\$139**

Profiteroles Stuffed with Ham Mousse

*\$124**

Asparagus with Prosciutto (in season)

With Blue Cheese Mayo

*\$159**

7-layer Bean Dip with Chips

*\$124**

Salmon Cream Cheese Checkerboard with Red Onions, Capers & Sour Dough Toast Points

*\$189**

Gulf Shrimp with Cocktail Sauce

*\$209**

Poblano Piñon Chicken Salad on

Sour Dough Toast Points

*\$139**

Fruit and Cheese Tray

*\$164**

Finger Sandwiches

(Roasted Red Pepper Ham, Turkey Poblano & Pimento Cheese Spreads)

(Select One Meat/Spread)

*\$138**

Hot Hors d' Oeuvres

(50 pieces per tray)

Bronzed Bacon Wrapped Shrimp

*\$209**

Quiche Lorraine

*\$124**

Chicken Drumsticks with Chimayo Sauce

*\$124**

Wheel of Brie Fried in a Golden Crust with Raspberry Sauce and Fruit Garnish

*\$133**

Open-faced Reubens

*\$129**

Buffalo Wings

*\$124**

Chicken and Bell Pepper Skewers

*\$139**

Green Chile Rangoons

*\$139**

Oriental Sesame Chicken Drumsticks with Ginger Sauce

*\$124**

Stuffed Mushrooms with Smoked Sausage & Cream Cheese

*\$149**

**All Prices are Per Person (unless otherwise indicated)*

All items subject to Sales Tax (7.25%) and Service Charge (20%)

Prices Subject to Change

Lodging Room Types and Rates

Main Lodge:

<i>Room Number</i>	<i>Room Type</i>	<i>Rate</i>	<i>Description</i>
101	<i>Governor's Suite</i>	<i>\$235 / Night</i>	<i>The two-room suite is one of Rebecca's favorite haunts. It opens onto an elegant foyer with a touch of Victorian decor. Romance abounds in the bedroom with a four-post Queen bed and full bath. The suite also offers a sitting area.</i>
245	<i>Honeymoon Suite</i>	<i>\$245 / Night</i>	<i>The romantic setting is perfect for lovers of all ages. Furnished with a King-size bed, full bath and a jetted tub, it's easy to leave the world far behind. In addition, the suite provides a sitting area, refrigerator, telephone data port and TV.</i>
105 110	<i>King Parlor Suite</i>	<i>\$195 / Night</i>	<i>These are two-room suites, which are located on the 2nd floor of The Lodge, are complete with a King Size, sitting room and full bath with a jetted tub, a sofa sleeper in the sitting room allows this room to easily accommodate three to four guests.</i>

*Room Number**Room Type**Rate**Description*

229
232
233

Queen Parlor Suite

*\$185 /
Night*

These are two-room suites, which are located on the 2nd floor of The Lodge, are complete with a Queen Size, sitting room and full bath with a jetted tub, a sofa sleeper in the sitting room allows this room to easily accommodate three to four guests.

351 356
352 357
353 358
354 359
355

King Platinum

*\$165 /
Night*

These are newly remodeled king size rooms, which are located on the 3rd floor of The Lodge. They are complete with a King size bed and full bath with tub.

360

Queen Platinum

*\$165 /
Night*

These are newly remodeled queen size rooms, which are located on the 3rd floor of The Lodge. They are complete with a Queen size bed and full bath with tub.

114
115
236

King Superior - SS

*\$155 /
Night*

Offering individually appointed rooms with antique furnishings. King bed with additional pull out sofa sleeper, full bath.

237

*King Trundle
Superior*

*\$155 /
Night*

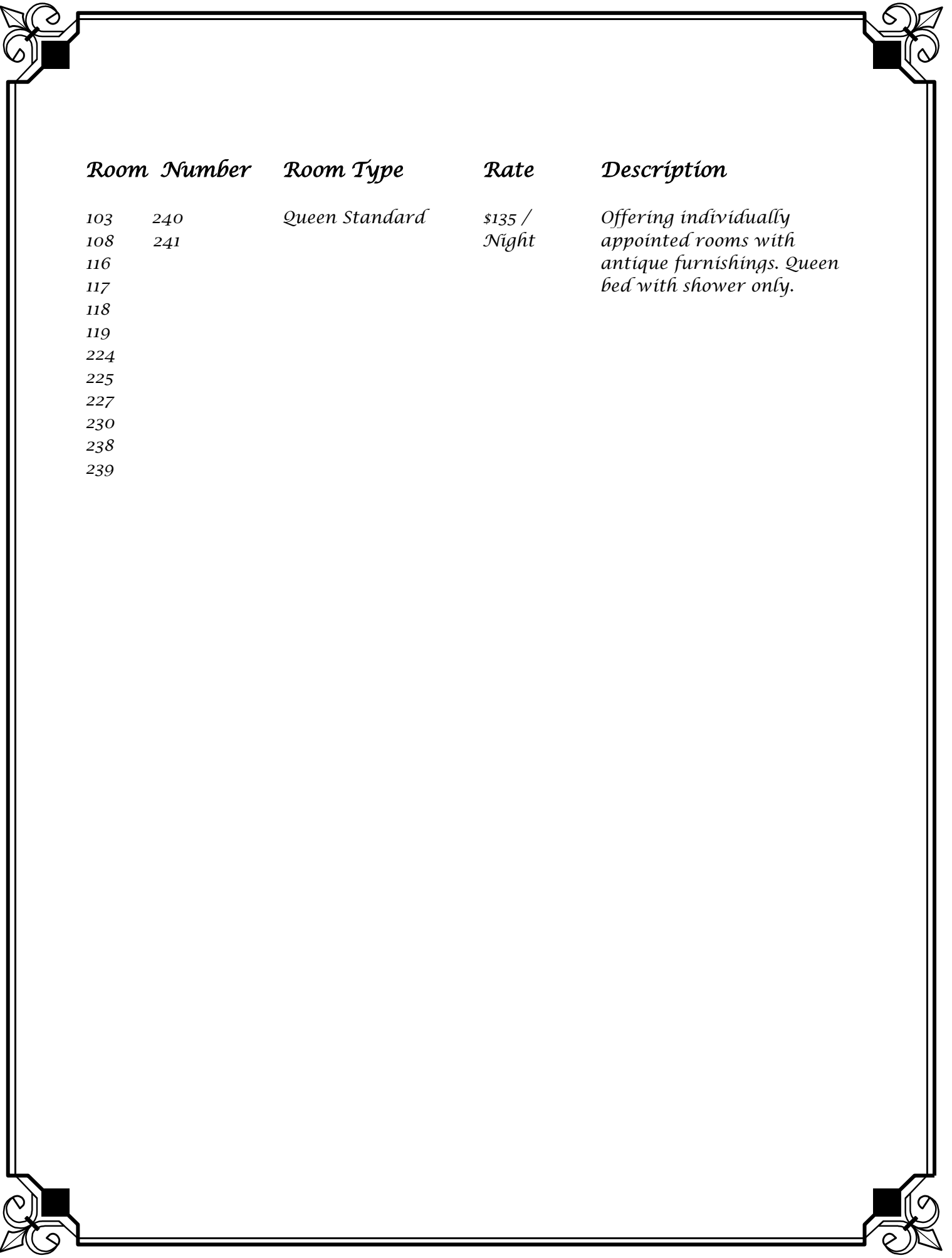
Offering individually appointed rooms with antique furnishings. King bed with trundle (day bed). Full bath.

104
109*
226
246
247
248
249

*Queen/Queen Superior
*ADA Compliant
Room*

*\$155 /
Night*

Offering individually appointed rooms with antique furnishings. Two queen beds with shower only.



<i>Room Number</i>	<i>Room Type</i>	<i>Rate</i>	<i>Description</i>
103	240	<i>Queen Standard</i>	<i>Offering individually appointed rooms with antique furnishings. Queen bed with shower only.</i>
108	241		
116			
117			
118			
119			
224			
225			
227			
230			
238			
239			

The Retreat:

<i>Room Number</i>	<i>Room Type</i>	<i>Rate</i>	<i>Description</i>
396	<i>King / King / Queen Retreat Suite</i>	<i>\$335 / Night</i>	<i>Two-bedroom suite, king bed, two queens, complete with a sitting area, gas fireplace, and wet bar; microwave, mini refrigerator, and bathroom with a spa-jetted tub; separate shower, and covered deck. All suites share a common area with a conference table, kitchen facilities, and billiard and Foosball table.</i>
394 395 397	<i>King Retreat Suite</i>	<i>\$255 / Night</i>	<i>King bed with sleeper sofa suite, complete with a sitting area, gas fireplace, and wet bar; microwave, mini refrigerator, and bathroom with a spa-jetted tub; separate shower and covered deck. All suites share a common area with a conference table, kitchen facilities, and billiard and Foosball table.</i>

The Pavilion:

<i>Room Number</i>	<i>Room Type</i>	<i>Rate</i>	<i>Description</i>
503 504 506	<i>King Pavilion</i>	<i>\$165 / Night</i>	<i>A cozy getaway to a classic "Gilded Age" Adirondack lodge, featuring knotty pine walls, for a quaint yet rustic setting. King bed, shower only. Located a short drive distance from the Main Lodge.</i>
501 502 505 508	<i>Queen Queen Pavilion</i>	<i>\$165 / Night</i>	<i>A cozy getaway to a classic "Gilded Age" Adirondack lodge, featuring knotty pine walls, for a quaint yet rustic setting. Two bedrooms with queen beds, shared bathroom. Located a short drive distance from the Main Lodge.</i>

Group Rate Policy:

A minimum of 10 (ten) rooms must be booked and occupied to receive group block lodging rate.

Group rate: 10% discount on every room reserved in a block. Rate quote does not include taxes or fees.